

Hochschule Aalen

OpenVPN

English Manual

Drobek, Adam
März 21

Preface

Some things in University can't be accessed through Internet, only in-house thus things like home-drive (Z:/Y:) need VPN Connection.

This small Manual will show you how to install VPN and Connect to University.

Contents

1	OpenVPN.....	3
1.1	Download and Installation.....	3
1.2	Import the Config-File.....	6
1.3	Starting OpenVPN.....	8
1.4	Ending the Connection.....	9
1.5	Failure	9

1 OpenVPN

OpenVPN is a free Software. Because most used Operating Systems are Windows-Systems, this instruction is for made for Windows.

For MacOS the application name is Tunnelblick. You can find Manual for it on Our Website (<https://www.hs-aalen.de/de/facilities/1/downloads>).

1.1 Download and Installation

You can download the newest version for VPN from the Developer. **Do not use** Beta- or RC-Version. **Check the release date!**

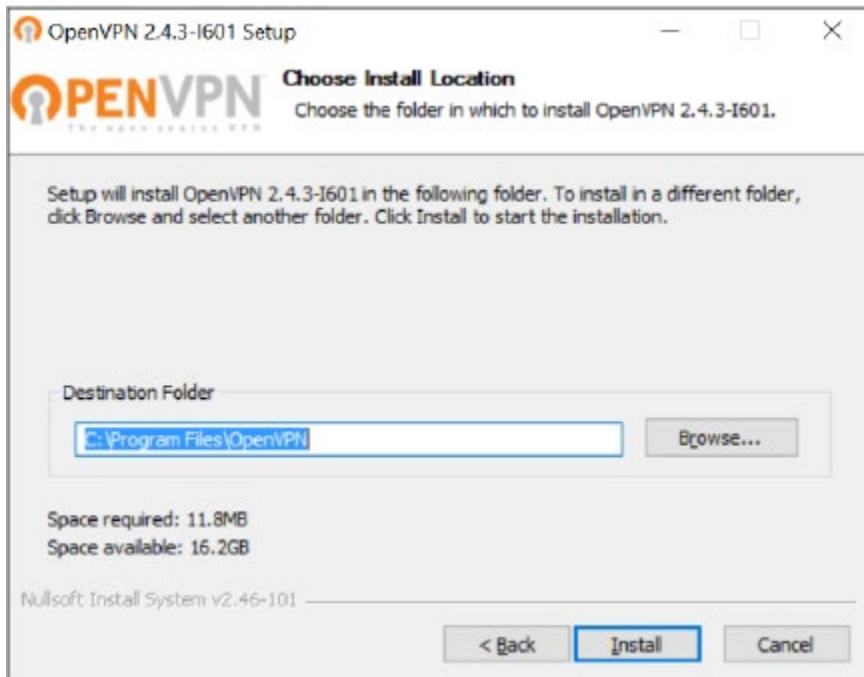
OpenVPN 2.6-rc2	SEE DETAILS
OpenVPN 2.5-rc1	SEE DETAILS
OpenVPN 2.5-beta4	SEE DETAILS
OpenVPN 2.5-beta3	SEE DETAILS
OpenVPN 2.5-beta1	SEE DETAILS
OpenVPN 2.4.9 — released on 2020.04.17	SEE DETAILS
OpenVPN 2.4.8 — released on 2019.10.31	SEE DETAILS
OpenVPN 2.4.7 — released on 2018.02.21	SEE DETAILS
OpenVPN 2.4.6 — released on 2018.04.24	SEE DETAILS

Website: <https://openvpn.net/index.php/open-source/downloads.html>

After some steps you will come to this point:

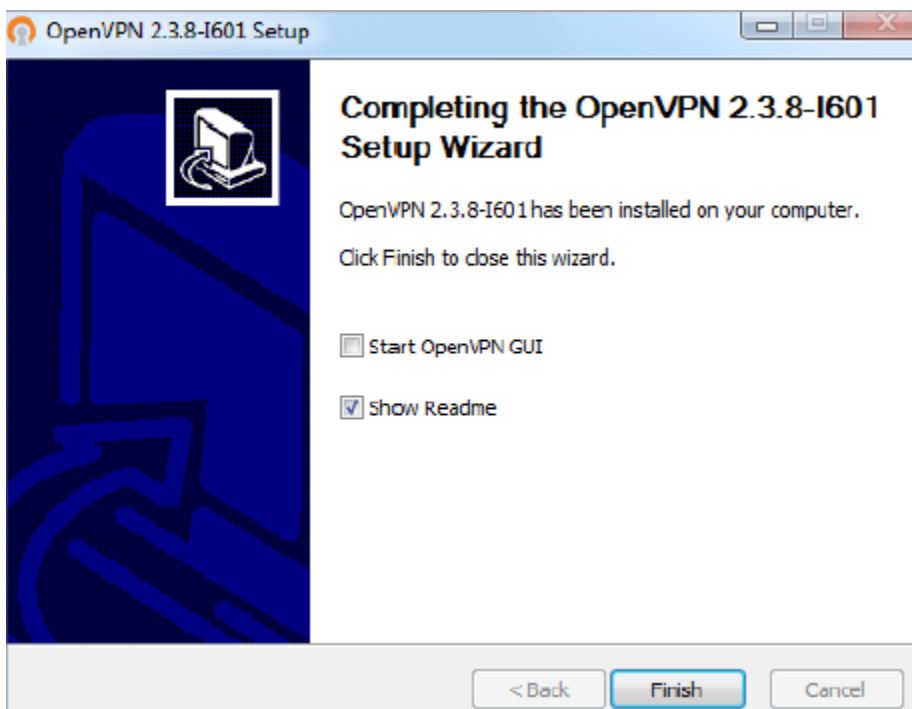


This is standard choice. It is fine. Click **Next**.



Click **Install**.

Now this window should appear:



Click **Finish**. Don't active „Start OpenVPN GUI“. The Installation is still not done. The configuration file needs to be imported

Important NOTE:

The configuration file specified here can only be used by members of the following groups of people:

- Enrolled students and students at the continuing education academy,
- University staff (people with a valid employment contract including lecturers) and
- PhD students.

Contact students, school students and external lecturers from the GSO do NOT belong to these groups.

These users, who still have an account at the university and have to access the Moodle learning platform externally, will receive a separate configuration file from their contact person via E-mail.

These groups of people must import the configuration file sent by e-mail and may NOT use the path given below!

Unfortunately, this distinction is necessary for licensing reasons.

1.2 Import the Config-File

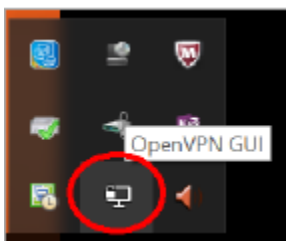
To import the configuration file follow the steps below:

Click twice at the OpenVPN GUI icon on desktop.

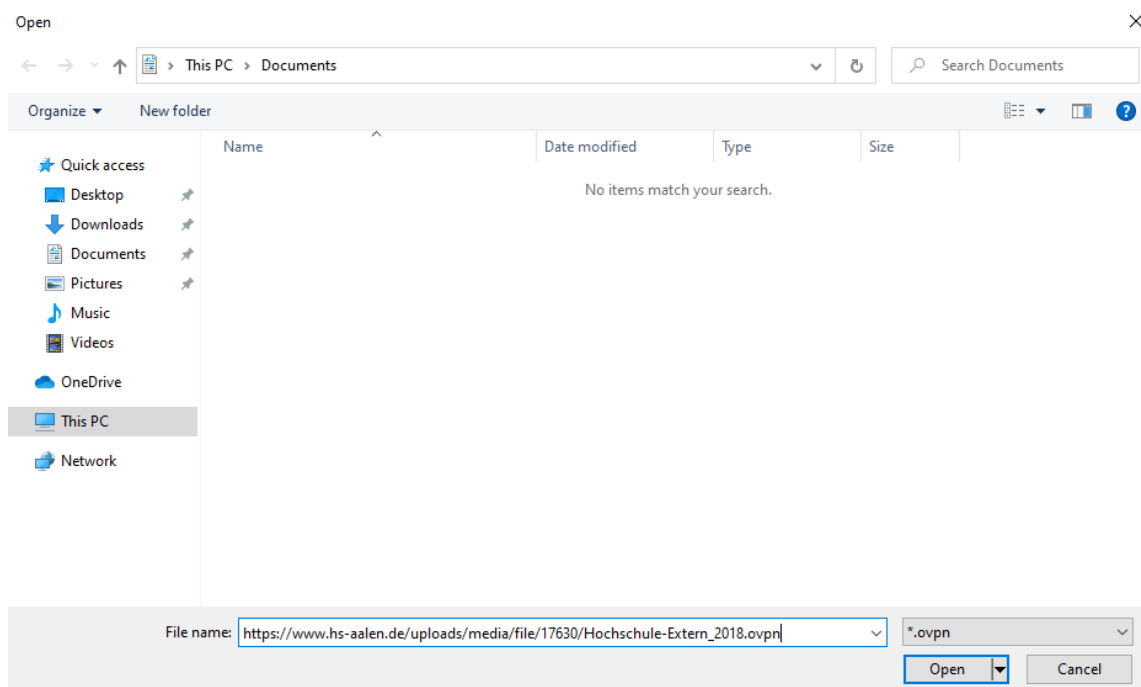
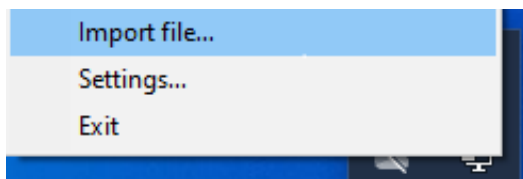


Now the Software started and it should be visible at taskbar (Right down corner)

Now Right Click at the shown Symbol in Taskbar.



Click **Import File**.



Copy the link below and paste it in File Name field.

https://www.hs-aalen.de/uploads/mediapool/media/file/17630/Hochschule-Extern_2018.ovpn

Now click **Open**.

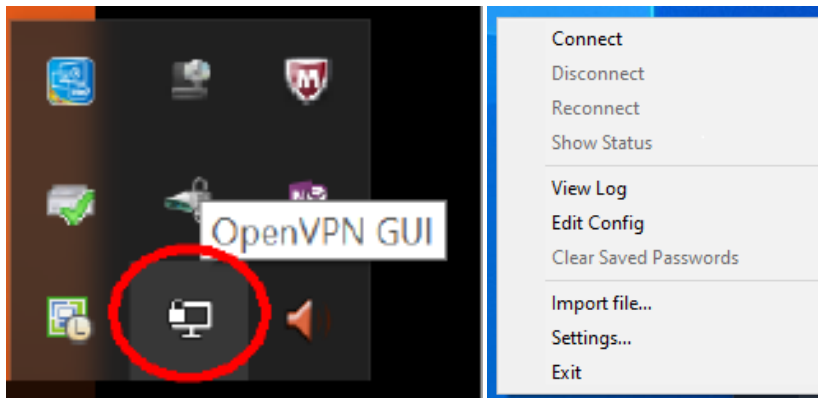
Note:

If the import of Configuration file doesn't work, open the link in Internet-Browser and save the File.

Then Import the File by writing its name in File Name field instead .

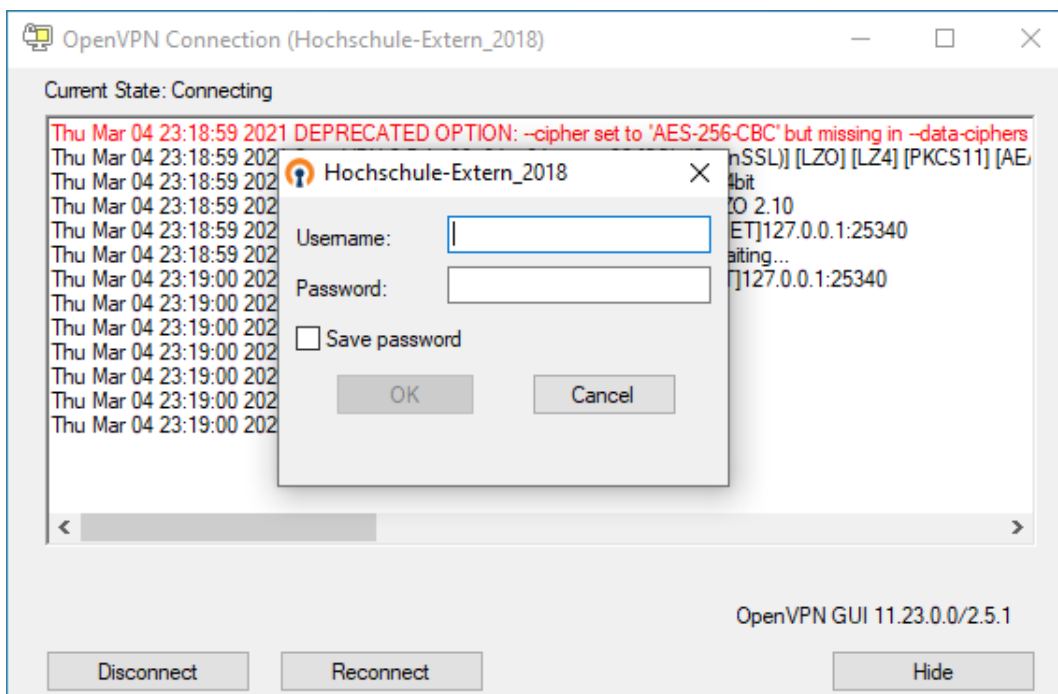
1.3 Starting OpenVPN

Right mouse click at the Icon in taskbar and click **Connect**.



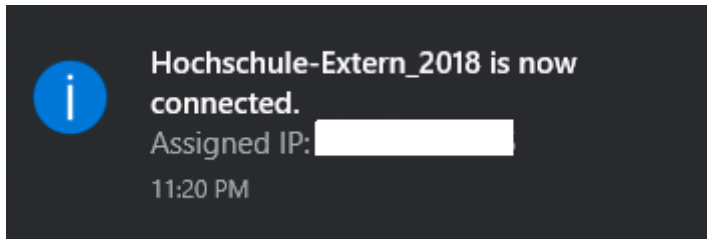
Now type your Username and your Password. Students Username is Matriculation number and for Personnel its Personnel number.

Do not type „htw-aalen\“ before Username



Click **Ok**.

Now at the Taskbar the OpenVPN-Icon should be green. If it is yellow, the connection could not be established. Try connecting again. Maybe the Username or Password was wrong?



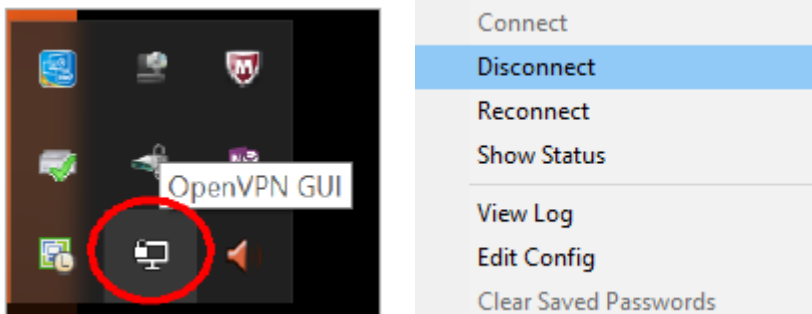
You can test the connection by opening the following website:

<https://intranet.htw-aalen.de/default.aspx>

If you can connect to the website, then the connection is done right.

1.4 Ending the Connection

At the taskbar right click the OpenVPN-Icon



And click **Disconnect**.

1.5 Failure

If the connection still doesn't work you can get help at helpdesk@hs-aalen.de