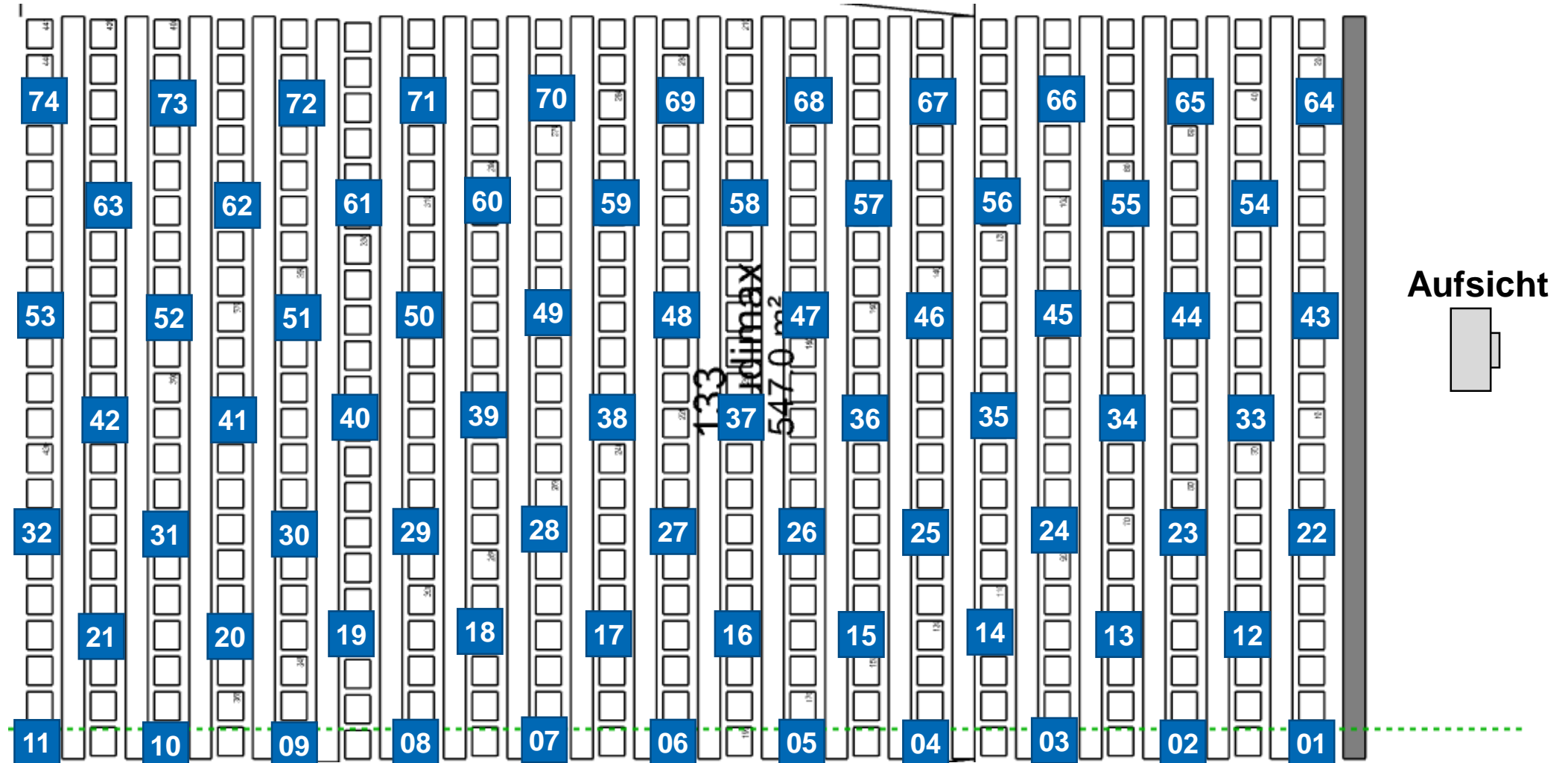
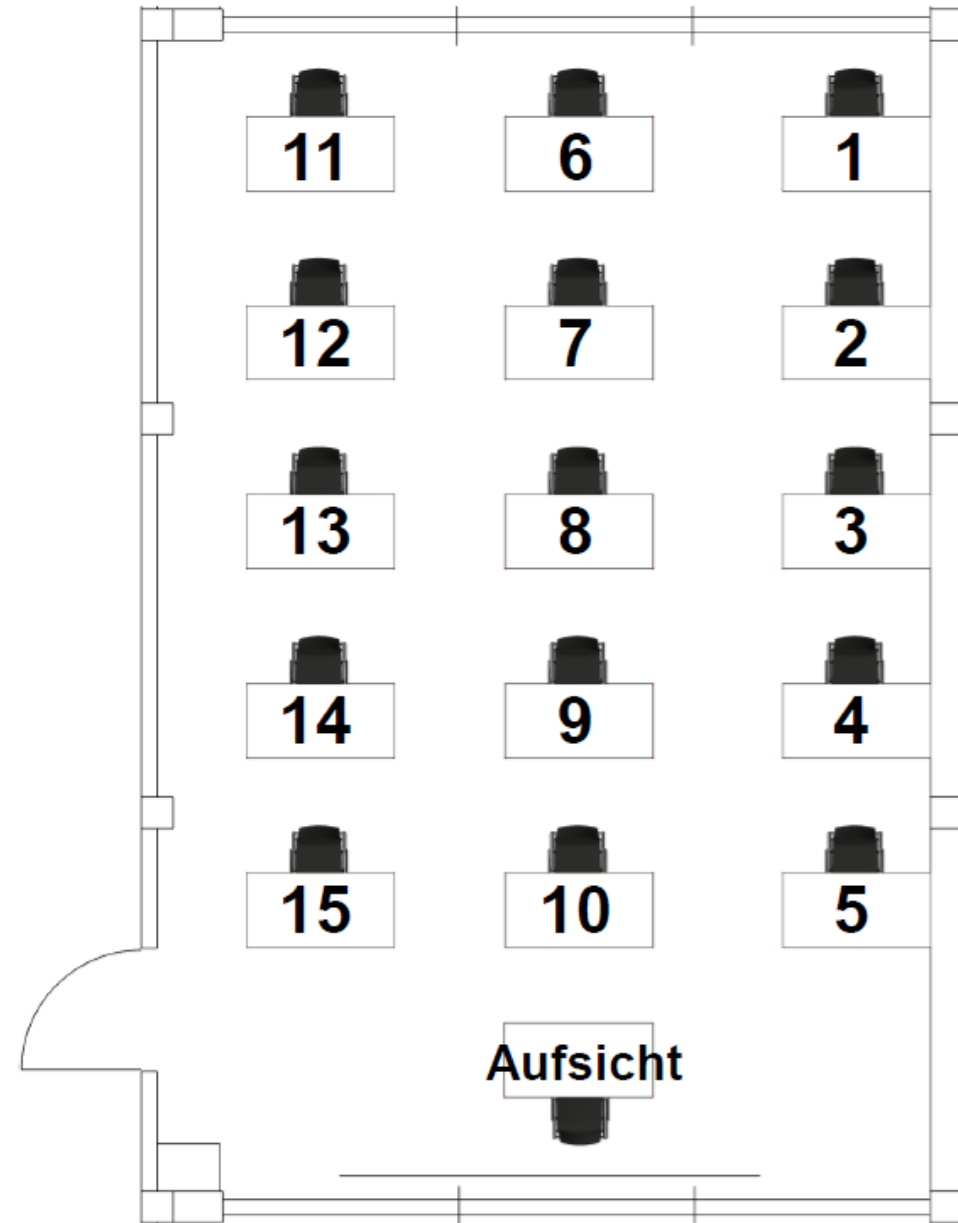


# Bestuhlungsplan BS1 Audimax

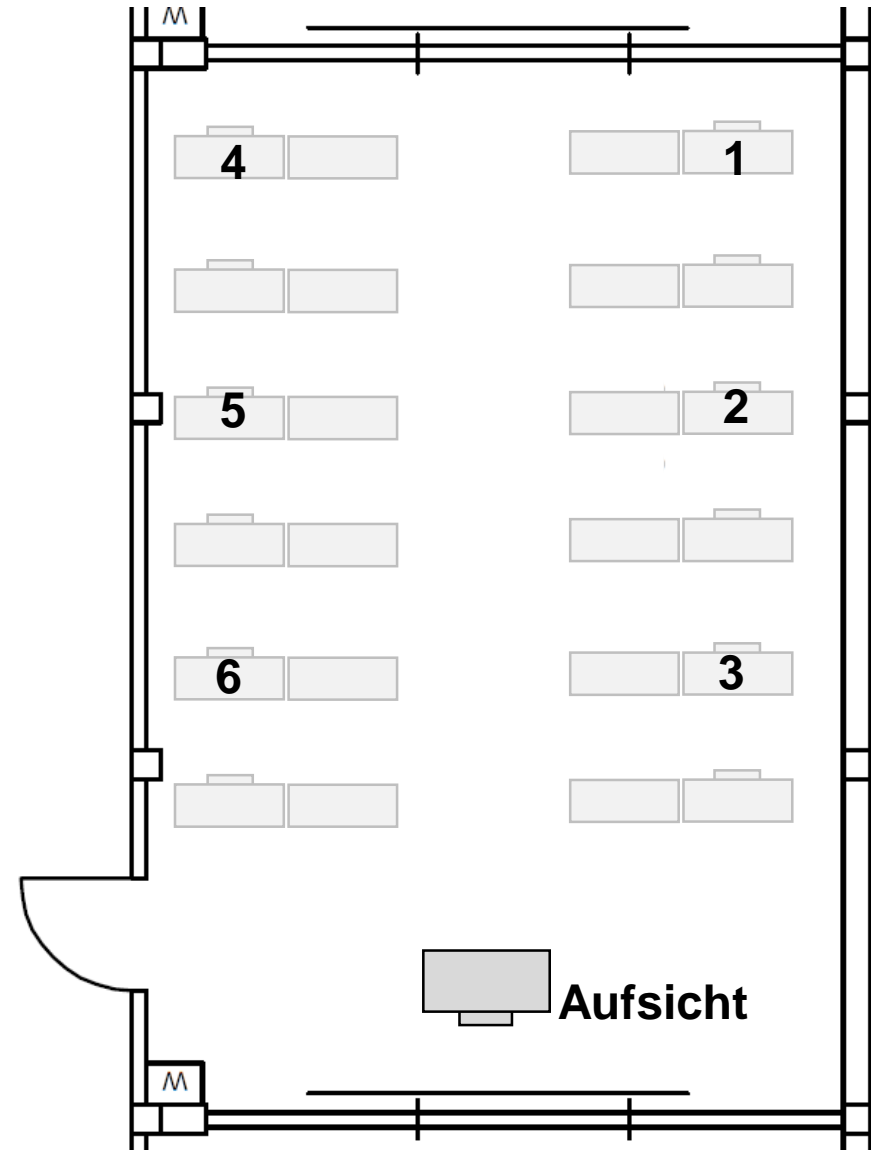


## Bestuhlungsplan BS1 Hörsäle

(101, 102, 103, 105, 111, 112, 114, 115, 120, 121,  
122, 124, 125, 201, 202, 203, 213)



# Bestuhlungsplan BS1 216



# Bestuhlungsplan BS1 275

